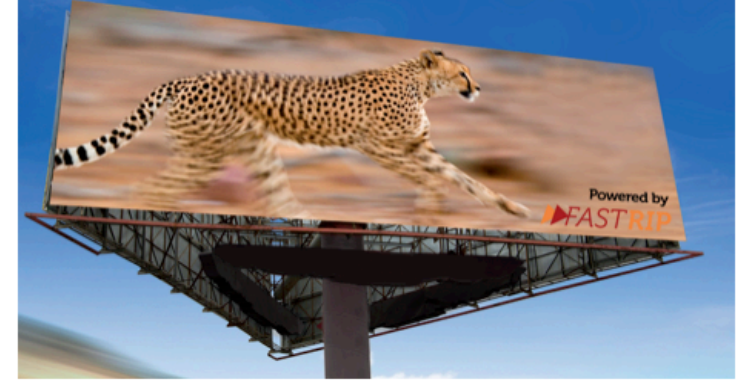




# Fiery® proServer and Fiery XF Spec Matrix



Application	Proofing	Production				Wide & Superwide Production			
Product Name	Fiery XF Proofing	Fiery XF Production	Fiery XF Premium	Fiery XF Print & Cut	Fiery XF for EFI Wide Format	Fiery XF for VUTEk	Fiery proServer SE	Fiery proServer Premium	Fiery proServer Core
Supported Printers	EFI + 3rd party	EFI + 3rd party	EFI + 3rd party	EFI + 3rd party	EFI + 3rd party	EFI + 3rd party	EFI only	EFI + 3rd party	EFI + 3rd party

System Requirements										
Server Platform	Mac or Windows	Mac or Windows	Mac or Windows	Mac or Windows	Mac or Windows	Mac or Windows	Mac or Windows	EFI PRO <sup>90</sup>	EFI QX <sup>100</sup>	EFI E400
<b>Fiery XF:</b> Supported Server Operating System(s) <b>Fiery proServer:</b> Installed Server Operating System(s)	Windows 7/8/8.1/10 and 2012/2016 Servers 64-bit support	Windows 7/8/8.1/10 and 2012/2016 Servers 64-bit support	Windows 7/8/8.1/10 and 2012/2016 Servers 64-bit support	Windows 7/8/8.1/10 and 2012/2016 Servers 64-bit support	Windows 7/8/8.1/10 and 2012/2016 Servers 64-bit support	Windows 7/8/8.1/10 and 2012/2016 Servers 64-bit support	Windows 7/8/8.1/10 and 2012/2016 Servers 64-bit support	Windows <sup>®</sup> 10 Professional for Embedded Systems x64	Windows <sup>®</sup> 10 Professional for Embedded Systems x64	Windows <sup>®</sup> 10 Professional for Embedded Systems x64
<b>Fiery XF:</b> Minimum / Recommended Server Memory <b>Fiery proServer:</b> Installed Server Memory	8 / 32 GB	8 / 32 GB	8 / 32 GB	8 / 32 GB	8 / 32 GB	8 / 32 GB	8 / 32 GB	32 GB	32 GB	16 GB
<b>Fiery XF:</b> Minimum / Recommended Server HDD <b>Fiery proServer:</b> Installed HDD	300 GB / 1.5 TB	300 GB / 1.5 TB	300 GB / 1.5 TB	300 GB / 1.5 TB	300 GB / 1.5 TB	300 GB / 1.5 TB	300 GB / 1.5 TB	3 x 1 TB	4 x 2 TB	2 x 1 TB
<b>Fiery XF:</b> Minimum Server CPU <b>Fiery XF:</b> Recommended Server CPU <b>Fiery proServer:</b> Installed Server CPU	Minimum: Quad Core CPU with 2 GHz  Recommended Windows: 8-Core CPU with 3 GHz  Recommended MAC: 6-Core Intel Xeon Westmere with 3.33 GHz	Minimum: Quad Core CPU with 2 GHz  Recommended Windows: 8-Core CPU with 3 GHz  Recommended MAC: 6-Core Intel Xeon Westmere with 3.33 GHz	Minimum: Quad Core CPU with 2 GHz  Recommended Windows: 8-Core CPU with 3 GHz  Recommended MAC: 6-Core Intel Xeon Westmere with 3.33 GHz	Minimum: Quad Core CPU with 2 GHz  Recommended Windows: 8-Core CPU with 3 GHz  Recommended MAC: 6-Core Intel Xeon Westmere with 3.33 GHz	Minimum: Quad Core CPU with 2 GHz  Recommended Windows: 8-Core CPU with 3 GHz  Recommended MAC: 6-Core Intel Xeon Westmere with 3.33 GHz	Minimum: Quad Core CPU with 2 GHz  Recommended Windows: 8-Core CPU with 3 GHz  Recommended MAC: 6-Core Intel Xeon Westmere with 3.33 GHz	Minimum: Quad Core CPU with 2 GHz  Recommended Windows: 8-Core CPU with 3 GHz  Recommended MAC: 6-Core Intel Xeon Westmere with 3.33 GHz	1 x Intel® Core™ I7-4770S, 3.1 GHz  2 x Intel® Xeon™ E5-2637V4, 4 x 3.5 GHz  2 x Intel® Xeon™ E5-2643, 4 x 3.3 GHz  (1)	1 x Intel® Core™ I7-6700, 4 x 3.4 GHz	1 x Intel® Core™ I7-6700, 4 x 3.4 GHz
Client Platform	Mac or Windows	Mac or Windows	Mac or Windows	Mac or Windows	Mac or Windows	Mac or Windows	Mac or Windows	Mac or Windows	Mac or Windows	Mac or Windows
Supported Client Operating System(s)	Windows 7/8/8.1/10 and 2012/2016 Servers Mac OS X 10.10/11/12/13 Both: 32- & 64-bit support	Windows 7/8/8.1/10 and 2012/2016 Servers Mac OS X 10.10/11/12/13 Both: 32- & 64-bit support	Windows 7/8/8.1/10 and 2012/2016 Servers Mac OS X 10.10/11/12/13 Both: 32- & 64-bit support	Windows 7/8/8.1/10 and 2012/2016 Servers Mac OS X 10.10/11/12/13 Both: 32- & 64-bit support	Windows 7/8/8.1/10 and 2012/2016 Servers Mac OS X 10.10/11/12/13 Both: 32- & 64-bit support	Windows 7/8/8.1/10 and 2012/2016 Servers Mac OS X 10.10/11/12/13 Both: 32- & 64-bit support	Windows 7/8/8.1/10 and 2012/2016 Servers Mac OS X 10.10/11/12/13 Both: 32- & 64-bit support	Windows 7/8/8.1/10 and 2012/2016 Servers Mac OS X 10.10/11/12/13 Both: 32- & 64-bit support	Windows 7/8/8.1/10 and 2012/2016 Servers Mac OS X 10.10/11/12/13 Both: 32- & 64-bit support	Windows 7/8/8.1/10 and 2012/2016 Servers Mac OS X 10.10/11/12/13 Both: 32- & 64-bit support
Minimum Client Memory	3 GB	3 GB	3 GB	3 GB	3 GB	3 GB	3 GB	3 GB	3 GB	3 GB
Minimum CPU Client	Dual Core CPU with 2 GHz	Dual Core CPU with 2 GHz	Dual Core CPU with 2 GHz	Dual Core CPU with 2 GHz	Dual Core CPU with 2 GHz	Dual Core CPU with 2 GHz	Dual Core CPU with 2 GHz	Dual Core CPU with 2 GHz	Dual Core CPU with 2 GHz	Dual Core CPU with 2 GHz
Options	Fiery XF Proofing	Fiery XF Production	Fiery XF Premium	Fiery XF Print & Cut	Fiery XF for EFI Wide Format	Fiery XF for VUTEk	Fiery proServer SE	Fiery proServer Premium	Fiery proServer Core	
Spot Color Option	✓	✓	✓	✓	✓	✓	✓	✓	✓	
Color Profiler Option	○	○	✓	○	○	✓	✓	✓	✓	
Color Verifier Option	✓	○	○	○	○	○	✓	✓	✓	
Cut Marks Option	○	○	✓	○	○	✓	✓	✓	✓	
Cut Server Option (Windows only)	○	○	○	○	○	○	○	○	○	
OneBit Option	○	○	○	○	○	○	○	○	○	
Printer Option M	○	○	○	○	○	○	-	○	-	
Printer Option XL	○	○	○	○	○	○	-	○	-	
Printer Option XXL	○	○	○	○	○	○	-	○	-	
Printer Option M-XXL (not orderable)	✓ 1 Printer included	✓ 1 Printer included	✓ 4 Printers included	-	-	-	-	✓ 1 Printer included	-	
Printer Option EF	○	○	○	○	✓	✓	-	✓	✓	
Printer Option EF SE	-	-	-	-	-	-	✓	-	-	
Printer Option Wide Format	○	○	○	○	○	○	-	○	-	
Printer Option Super Wide Format	○	○	○	○	○	○	-	○	-	
Print & Cut Option	○	○	○	✓	○	○	-	○	-	
File Export Option	○	○	○	○	○	✓	-	✓	-	
Softproof Option	○	○	○	○	○	○	-	○	-	
Fiery Option	○	○	○	○	○	○	-	○	-	
Sign Flow Option	-	-	-	-	-	-	-	✓	-	
EFI ES-2000 Spectrophotometer	○	○	○	○	○	✓ / ○ (2)	✓	✓	○	

Legend: ✓ Standard ○ Optional. - not applicable

(1) Depends on the country being shipped to

(2) Two available configurations: One with the EFI ES-2000 included and one with the ES-2000 optional.

Fiery Foundations